

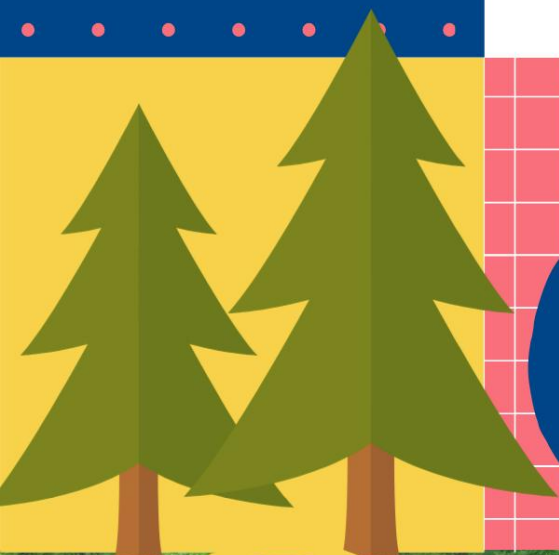


SUMMER

2026

LINDENHURST PARK DISTRICT

CAMPS



REGISTRATION BEGINS 3/2/2026

847.356.6011
WWW.LINDENHURSTPARKS.ORG



Outdoor Rentals

Reservations
Open March 2, 2026

SPLASH

Spray 'N Play Rentals
Available 5/27-9/4

www.lindenhurstparks.org

The Splash Pad is located in Oak Ridge Park,
nestled in a quiet neighborhood located at
600 Independence Blvd.

Please call 847.356.6011 or email
lfriedl@lindenhurstparks.org to book your rental
or stop by the Community Center at
2200 E. Grass Lake Road.

Adventure Awaits



**Reservations
Open March 2, 2026**

PARKS

Outdoor Rentals

Available - 4/15-10/15

www.lindenhurstparks.org

- Linden's Landing Park Shelter
- Mallard Ridge Park Shelter
- Millennium Park Shelter
- Parkman Pavilion
- Court, Fields, Turf, and Skateboard/BMX

Please call 847.356.6011 or email
lfriedl@lindenhurstparks.org to book your rental
or stop by the Community Center at
2200 E. Grass Lake Road.





SUMMER CAMP 2026 PROGRAM GUIDE

TABLE OF CONTENTS

General Information

About Us..... 4

Camp Directory..... 6

Registration Form..... 23

Registration Information..... 5

Rentals..... 2,3

Youth Camps

Camp Exploration..... 8-14

Cheer, Dance & Music..... 15, 16

Chess..... 17

Early Childhood..... 7

Sports..... 18

Theatre..... 19-22

Registration and Administrative Offices

Thomas J. Lippert Community Center
2200 East Grass Lake Road • Lindenhurst, Illinois
60046

Contact

Email info@lindenhurstparks.org
Main Line 847.356.6011

In-Person Registration Hours

M-F, 9:00am-4:00pm

Office Closed

Memorial Day-Monday, May 25, 2026
Independence Day-Friday, July 3, 2026

Staff Directory

Director of Recreation, **Katie Kozuch**
kkozuch@lindenhurstparks.org 847.356.6011 ext. 1004
Recreation Program Manager, **Meghan McCarthy**
mmccarthy@lindenhurstparks.org, 847.356.6011 ext. 1005
Athletic Program Manager, **Dylan Hebior**
dhebior@lindenhurstparks.org, 847.356.6011 ext. 1006



Exclusively Available
Online!



Creating Community Through
People, Parks, and Programs

Inclusion and Special Recreation

Inclusion services are available to Park District Residents for programs and summer camps through the Warren Special Recreation Association (WSRA). A minimum of three weeks’ notice is required prior to the start of the program in order to arrange proper accommodations. For more information, please contact the Director of Recreation, Katie Kozuch, at 847.356.6011 x 1002 or kkozuch@lindenhurstparks.org.

Mission Statement

To enrich the quality of life for the people of our community by providing parks, recreational programs, and facilities through the efforts of staff, the generosity of area residents and businesses, and the cooperation of governmental and private agencies.

Vision Statement

To be a leading Park District that delights and exceeds the expectations of the community with respect to recreation and parks.



Why travel when the best programs are right here at home!

Love our programs, but spotted a lower price elsewhere?

If another Park District or Parks and Recreation Department offers a **comparable class** with the same age, time, and number of sessions for a lower fee, we'll **match their price**. It's our way of keeping recreation local, affordable, and welcoming to everyone!

How it Works: Find a similar program at a lower cost and show us the lower price, and we'll match it, it's simple as that! Creating Community through People, Parks, and Programs... Now with a Best Price Guarantee!

How Do I Register

Online
REGISTRATION

Visit our website at
www.lindenhurstparks.org.

In-Person
REGISTRATION

Lindenhurst Park District
M-F, 9:00am-4:00pm
2200 East Grass Lake Road
Lindenhurst, Illinois 60046

Mail-In
REGISTRATION

Lindenhurst Park District
Att: Registration
2200 East Grass Lake Road
Lindenhurst, Illinois 60046

Email
REGISTRATION

Email a completed registration form and waiver to
registration@lindenhurstparks.org.

This Way To Fun!



Save Time & Register Online!

REGISTRATION
BEGINS AT 9AM

March 2, 2026
RESIDENT & NON-RESIDENT

Park District residents receive a 20% discount off most listed prices!

Are you a **NEW** Lindenhurst Park District resident? Set up your resident discount by calling the office before registering online at 847.356.6011.

How to Create a New Client Account

If you do not have an account, go to our website at www.lindenhurstparks.org.

1. Click on the **Registration Tab**.
2. Choose an activity to register for and click **"Create an account"** on the bottom left of the pop-up window. The account must belong to an adult 18 years or older.
3. You will receive an email confirmation that your account was successfully created. This email must be validated to activate your account information.
4. Lindenhurst residents must call before they register to receive the resident discount.

Log-in to an Existing Account

Once your account has been activated you can access it by going to www.lindenhurstparks.org selecting the **"My Account"** tab and clicking **"Log-in"** or choose the activity you want to register for and you will be prompted to log-in.

Your email address is your username. If you forget your password, reset with your username or choose to log in via Facebook, Google, or Office 365.

How Do I Pay?

Register online using Visa, MasterCard, American Express or Discover. For in-person or mail-in registration, cash, check, or charge payments may be made. Checks should be made payable to Lindenhurst Park District. There will be an automatic \$25.00 service charge on all returned checks and credit cards with insufficient funds.

Refund Policy

To receive a refund, you must withdraw from a program at least 7 days prior to the start. Program refunds will be less a \$5 service charge for programs under \$99 or a \$10 service charge for programs over \$100. Withdrawals within one week of the start date will only be refunded for medical reasons or relocation. Full refunds will be given when the district cancels programs due to low registration. Refunds will be processed within 14 days of request. Please note that all refunds will be processed as a household credit. Trips, one-time programs, and special event refunds will be less prepaid costs such as tickets, admission, and meals regardless of withdrawal date.



ALL KINDS OF CAMPS JUST FOR YOU!

Summer Camp Registration Begins
March 2, 2026 at 9:00am
Visit www.lindenhurstparks.org to Register

				June 1 – June 5	June 8 – June 12	June 15 – June 19	June 22 – June 26	Saturday/Sunday June 27 - June 28	June 29 – July 2 (No camp 7/3)	July 6 – July 10	Saturday/Sunday July 11-July 12	July 13 – July 17	Saturday/Sunday July 18-July 19	July 20 – July 24	July 27 – July 31	Aug. 3 – Aug. 7	Aug. 10 – Aug. 14
Age	Camp Name	Time	Days	W1	W2	W3	W4	W4+	W5	W6	W6+	W7	W7+	W8	W9	W10	W11
3-4	Little Cabooses	9-11:15a	T/TH	*						*							
3-6	Dance/Cheer Workshop	1p-2:30p	M-F			*											
3-6	Dance/Cheer Workshop	1p-2:30p	M-F				*										
3-6	Dance/Cheer Workshop	1p-2:30p	M-F						*								
3-6	Dance/Cheer Workshop	1p-2:30p	M-F									*					
3-6	Dance/Cheer Workshop	1p-2:30p	M-F												*		
4-5	Little Locomotives	9-11:30a	M/W/F	*						*							
4-5	Lunch Bunch	11:30-12:30p	M/W/F	*						*							
4-6	Safety Town	9:15-11a	M-F												*		
4-8	Theatre Camp	9-11:30a	M-F							*							
4-12	Horse Camp	9a-12:30p	M-F	*		*	*			*		*		*	*	*	*
5-7	Basketball Camp	9-10:30am	M-F		*												
5-10	Theatre Camp	9-11:30a	M-F									*					
5-12	Camp Explortation	9a-3p	M-F	*	*	*	*		*	*		*		*	*	*	*
5-12	Early Bird	7-9a	M-F	*	*	*	*		*	*		*		*	*	*	*
5-12	Stay and Play	3-5:30p	M-F	*	*	*	*		*	*		*		*	*	*	*
5-12	Chess Wizards	9am-12pm	M-F									*					*
5-12	Chess Wizards	9am-3pm	M-F									*					*
5-12	Chess Wizards	12pm-3pm	M-F									*					*
6-12	Dance Camp	9-11:00am	M-F				*										
6-12	Dance Mini Camp	9a-11:00a	Sat/Sun					*									
6-16	Tetra Brazil Soccer Camp	9a-12p or 3p	M-F											*			
7-9	Sand Volleyball Camp	9am-12pm	M-F							*							
7-12	Dance Mini Camp	9:30a-12:00p	Sat/Sun	*							*					*	
7-12	Dance Mini Camp	9:30a-12:00p	Sat/Sun									*					
8-11	Basketball Camp	10:45a-12:15p	M-F		*												
9-13	Theatre Camp	9-11:30a	M-F											*			
10-13	Sand Volleyball Camp	9am-12pm	M-F											*			
11-14	Basketball Camp	12:30-2pm	M-F	*													

The Lindenhurst Park District Summer Camps offer a structured opportunity for children to grow. Kids become independent and self-confident while socializing and making new friends and memories that will last a lifetime.

EARLY CHILDHOOD CAMPS



CAMP OPEN HOUSE - SESSION 1 & 2

Little Caboose: Thursday, June 4, 9:30am-10:00am

Little Locomotives: Friday, June 5, 9:30am-10:00am

Bring your child to meet camp staff and explore the classrooms, pick up camp calendars and t-shirt, and complete camp paperwork.

LITTLE CABOOSSES: 3 YEARS

\$160NR

Location: Preschool A

Min/Max: 12/16

Instr: Susie Derrick/Carol Johnson

S1 Reg. Deadline: Mon, June 1 or when full

Tu/Th, 6/9-6/25, 9:00am-11:15am, 6 classes

S2 Reg. Deadline: Wed, July 1 or when full

Tu/Th, 7/7-7/23, 9:00am-11:15am, 6 classes

LITTLE LOCOMOTIVES: 4 YEARS

\$240NR

Location: Preschool B

Min/Max: 12/16

Instr: Kristin Brean/Sarah Anderson

S1 Reg. Deadline: Mon, June 1 or when full

M/W/F, 6/8-6/26, 9:00am-11:30am, 9 classes

S2 Reg. Deadline: Wed, July 1 or when full

M/W/F, 7/6-7/24, 9:00am-11:30am, 9 classes

*Little Locomotives
Campers Extend Your
Day and Register for
Lunch Bunch!*



LUNCH BUNCH: 4 YEARS

\$115NR

Pack a nut-free sack lunch—it's time for a picnic in the park with friends. This is the perfect way to end a Little Locomotives Summer Day Camp morning or for children not enrolled in summer camp to make new friends and enjoy the summer weather while participating in outdoor games, activities, and free play! Children enrolled in Little Locomotives will be escorted to class by Park District staff. In the event of inclement weather, the class will meet inside the Community Center for indoor picnic fun

Location: Preschool B

Min/Max: 8/16

Instr: Kristin Brean/Sarah Anderson

S1 Reg. Deadline: Mon, June 1 or when full

M/W/F, 6/8-6/26, 11:30am-12:30pm, 9 classes

S2 Reg. Deadline: Wed, July 1 or when full

M/W/F, 7/6-7/24, 11:30am-12:30pm, 9 classes



Lindenhurst residents will receive a 20% discount!

Little Crossings caters to our youngest campers, ages 3-4. Our schedule includes arts and crafts, stories, games, outdoor play, and themed activities. Instructed by Engle Junction Preschool staff, this is the perfect way to ease your child's transition into preschool or keep them engaged throughout the summer. **Children must be able to use the restroom independently and be the appropriate age at the start of the session.**



SAFETY TOWN: 4-6 YEARS

\$105NR

Early safety education is important for all children. Through games, songs, videos, art activities, and special guest speakers, Safety Town citizens are immersed in a week of safety awareness. Topics include home and fire safety, police and strangers, streets and bicycles, and safe water play, and include visits from our local police and fire departments.

Location: Preschool D

Instr: Mrs. Kat

Reg. Deadline: Mon, July 20 or when full

M-F, 7/27-7/31, 9:15am-11:00am, 5 classes

CAMP EXPLORATION

K-6 GRADE
2026



**SO MUCH TO DISCOVER,
ONLY ONE SUMMER!**

Lindenhurst Park District
Community Center
2200 East Grass Lake Road
Lindenhurst, IL 60046
847.356.6011
www.lindenhurstparks.org



EXPLORE SUMMER WITH US

Camp Exploration is held at the Lindenhurst Park District Community Center and the surrounding Engle Memorial Park. Campers will take advantage of all the amenities, including sprawling open space, soccer fields, gaga pit, Skate/BMX Park, basketball court, in-line hockey rink, Parkman Pavilion, playgrounds, full-sized indoor gym and track, and walking paths.

- Camp Exploration is designed for children **entering** Kindergarten through 6th grade in the upcoming school year.
- Offers activities catering to various interests.
- Ideal for aspiring explorers, sports enthusiasts, and kids looking to make new friends.
- Provides a wide range of activities and opportunities to create lasting memories.
- Field trip every Wednesday, splash pad visit each week, and special activities planned each Friday.



ADVENTURE AWAITS WITH THE LINDENHURST PARK DISTRICT!

CAMP EXPLORATION



PARENT ORIENTATION

THURSDAY, MAY 28

5:30-6:30pm

Activity 2

All Families are
Encouraged to Attend!

PARENTS

Meet our staff, listen to a presentation and get all of your questions answered. You will also tour our summer camp location!

CAMPERS

Meet camp counselors, see their camp space, and become familiar with our building. Camp staff will provide supervision and facilitate play while parents are in orientation.

WHAT TO BRING -

Label all items with your child's name

- **Nut-free** lunch
- Water Bottle
- Sunscreen (spray preferred)
- Bathing Suit
- Towel
- 2 **nut-free** snacks
- Change of clothes
- Hat and/or sunglasses

NEWSLETTER

A weekly newsletter and calendar will be sent to the email on file the Friday prior to the start of the camp week with a schedule of events and activities planned. Activities and scheduled events may change throughout the week due to weather and/or unforeseen circumstances.

*Thank you to Orthodontic Specialists
of Lake County, Ltd. for providing
T-shirts for all our summer campers!*



**Orthodontic Specialists
of Lake County, Ltd.**

SIMPLY SPECTACULAR SMILES
(Formerly Drs. Sellke & Reily, Ltd.)

EXPLORE



CAMP EXPLORATION

Lindenhurst residents will
receive a 20% discount!

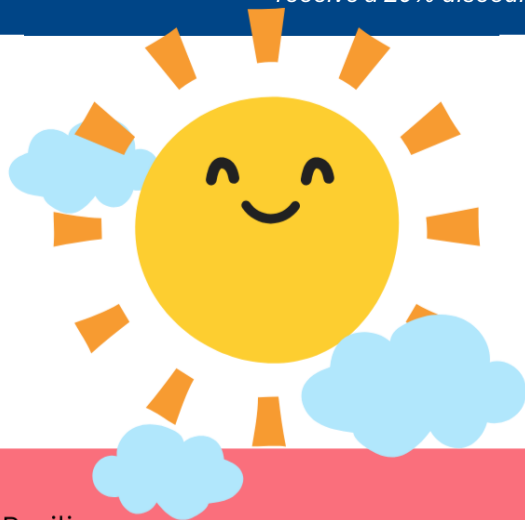
NEW!

Camper drop-off and pick-up all in one location! All groups will drop-off and pick-up at the Skate Park on the North side of the Community Center parking lots. Park in a parking space, and come grab your campers from staff!



LITTLE Explorers

Drop-Off/Pick-Up Location:
Skate Park



GRADES K & 1

Hanging out at the Parkman Pavilion

Little Explorers is where our youngest adventurers begin their journey of discovery! This fun-filled camp is designed for Kindergarten and 1st grade campers, to explore the wonders of nature, arts, sports, and teamwork in a safe and nurturing environment. Through hands-on activities like nature walks, simple science experiments, arts and crafts, and fun challenges your camper will develop their curiosity, creativity, collaboration and make new friends.

Exploration SQUAD

Drop-Off/Pick-Up Location:
Skate Park



GRADES 2 & 3

Hanging out at the Tent

Campers in 2nd and 3rd grade will dive into outdoor adventures, creative and expressive activities, dabble in STEM missions, and challenge themselves through games and sports! Whether they are crafting imaginative projects, discovering secrets of nature, or working their way through a competition bracket, our camp is designed to empower campers to be bold, independent thinkers! This camp is all about variety, balance, and FUN to keep campers engaged, active, and excited every day!



Explorer WARRIORS

Drop-Off/Pick-Up Location:
Skate Park




GRADES 4-6

Hanging out at the Skate Park Shelter

Explorer Warriors is designed for grades 4th-6th who are ready to LEVEL UP! Kids will develop independence through complex and challenging experiences, nurturing their craving for independence and social interaction. With a focus on choice and autonomy, these Warriors will “create their own adventure” by giving input on the activities of the day. Through sports and challenges, creative and expressive pursuits, STEM missions, and social and collaborative activities, kids will take on responsibility helping to increase their independence and self-confidence, while developing skills. Is your camper ready to Level Up? We’re ready to challenge them!



REGISTRATION JUST GOT EASIER! ADVANCED REGISTRATION IS REQUIRED!

Click, Add to Cart, and Check out!
Summer Camp – CHECK! 

The Fine Print

**Visit our website, call, or stop by our
Community Center to get registered!**

- Choose your camp based on the grade your child will be entering this fall.
- Choose your session(s) and/or individual day(s).
- Registration must be received by the advertised weekly deadline to avoid an automatic \$40 late fee.
- All campers may include up to 2 primary guardians and 2 emergency contacts during registration. The people listed will be approved to pick up your camper and may be contacted in emergency situations.

Camp Exploration Fees

9:00am-3:00pm

Session ("Weekly") Registration

M-F \$200NR

Week 5 (7/3) \$160NR

Daily ("Drop-In") Registration

M, Tu, Th, F \$45NR per day

Field Trips

Wednesday \$66NR per day

Add On Options-Early Bird and Stay & Play

Start your day with a smile or keep the fun going with our Early Bird and Stay & Play Camp! Whether your camper is an early riser or loves to linger in the excitement, these extended hours are packed with engaging games, creative activities, and plenty of laughter. It's the perfect way to make new friends, explore favorite activities, and enjoy extra moments of camp magic.

Early Bird	7:00am-9:00am	\$14NR per day
Location:	Activity 2	\$65NR per week
		\$52NR week 5
Stay & Play	3:00pm-5:30pm	\$20NR per day
Location:	Activity 2	\$95NR per week
		\$76NR week 5

Daily Registration

Pick and choose individual days throughout the summer! No minimum is required. Note: Most Wednesdays are Field Trip Days and require separate registration. Choose all your days from one simple calendar, add to your cart, and checkout. It's THAT easy! Daily registration must be received at least 7 days in advance. Registration may be accepted after the deadline if space is available; subject to a \$40 late fee. **No Camp July 3.**

Weekly Registration

The best value! Register for the weekly session and the Wednesday Field Trip is included! Register by the advertised weekly deadline on page 13. Registration may be accepted after the deadline if space is available; subject to a \$40 late fee. **No Camp July 3.**

Wednesday Field Trips

Strictly looking for adventure? Only want certain trips? With Field Trip Only registration, you can pick the trips for your camper for the whole summer from one simple calendar! Register for one or for all! But remember, spots are limited and fill up quickly! Field Trip registration must be received at least 7 days in advance. Registration may be accepted after the deadline if space is available; subject to a \$40 late fee. No field trip on June 3 or August 12.



CAMP EXPLORATION

Themes, Schedule, and Deadlines

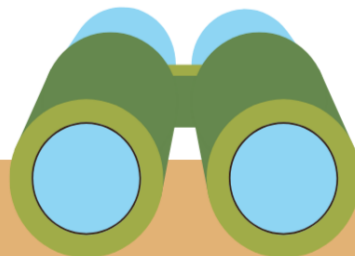
**LITTLE EXPLORERS,
SQUAD AND
WARRIORS
WILL DISCOVER ADVENTURES
AROUND EVERY CORNER!**

We will also visit the Oak Ridge Splash Pad each week on Tuesdays and Thursdays!

Schedule is subject to change.

All registrations received after the registration deadline will be subject to a \$40 late fee.

CAMP SCHEDULE



Dates	Theme	Wednesday Field Trip	Friday Fun Activity	Weekly Reg. Deadline
Week 1 6/1-6/5	Aloha Camp Exploration	No Field Trip	Bounce House at LPD	Fri, May 22 by 4pm
Week 2 6/8-6/12	Setting the Stage for Summer Fun	Movie Theatre	Camper Talent Show	Mon, June 1 by 4pm
Week 3 6/15-6/19	Around the World	Kenosha King Fish Game- Lunch Included	All Camp Scavenger Hunt	Mon, June 8 by 4pm
Week 4 6/22-6/26	Exploring the Ocean Blue	Barefoot Bay Pool at Mundelein Park District	Bubble Bash at LPD	Mon, June 15 by 4pm
Week 5 6/29-7/2 No camp 7/3	Red, White, and Blue-tiful Summer	More Info Coming Soon	Tie-Dye	Mon, June 22 by 4pm
Week 6 7/6-7/10	Through the Decades Time Travelers	More Info Coming Soon	Caboose Park Fun!	Mon, June 29 by 4pm
Week 7 7/13-7/17	Halfway to the Holidays	Roller Skating at Bella's Bouncies	All Camp Flag Football Game	Mon, July 6 by 4pm
Week 8 7/20-7/24	Under the Big Top	Barefoot Bay Pool at Mundelein Park District	All Camp Carnival	Mon, July 13 by 4pm
Week 9 7/27-7/31	Where the Wild Things Are	More Info Coming Soon	Animal Quest Visits	Mon, July 20 by 4pm
Week 10 8/3-8/7	Sports Week: Rookies to MVP's	More Info Coming Soon	MONDAY FUN with Jason the Juggler	Mon, July 27 by 4pm
Week 11 8/10-8/14	Camp Exploration is Out of This World!	No Field Trip LPD Staff vs. Camper Kickball Game	End of Summer Pizza Party!	Mon, Aug. 3 by 4pm



CAMP EXPLORATION



EXPLORER

WEEKLY THEMES

Get ready for an EPIC summer at camp! We've got a lineup of themed weeks so awesome, you won't want to miss a single one:

Week 1: Aloha Camp Exploration

Say "aloha" to the start of camp! Activities will be centered around the start of summer (summer crafts and bucket lists) and the start of new friendships.



Week 2: Setting the Stage for Summer Fun

Lights, camera, ACTION! Campers will be bringing their favorite cinematic moments to life through action-packed activities and crafts. From superheroes to princesses, every camper will be able to experience their award-winning moment in our camp talent show.



Week 3: Around the World

Exploration reaches a new level! Campers will "take flight" throughout the week, learning about different countries through activities with their own camp passports! Campers will similarly play popular outdoor/camp games from around the globe.



Week 4: Exploring the Ocean Blue

Set sail with Camp Exploration as we explore the mysteries of the sea! From sea animal crafts to pirate games, campers are bound to have a WAVE of a time!



Week 5: Red, White, and Blue-tiful Summer!

Come celebrate the holiday with Camp Exploration! Campers will engage in everything red, white, and blue through themed activities and crafts, and end the week with a tie-dye celebration!



Week 6: Through the Decades Time Travelers

Join Camp Exploration as we go on a totally rad voyage throughout the decades! Campers will participate in activities that represent different moments in history and play old-school favorite games.



Week 7: Halfway to the Holidays

We are bringing the magic of the holidays to Camp Exploration! Campers will be able to bring together the fun of summer and winter activities through instant snow crafts and winter Olympic-inspired challenges!



Week 8: Under the Big Top

Come one, come all to Camp Exploration for a week full of carnival fun! From engaging challenges to circus-related activities, campers will be able to experience all the carnival fun...especially at our onsite carnival!



Week 9: Where the Wild Things Are

Camp Exploration is the place for all things wild...activities will be centered around all things animals! From the freezing Arctic to tropical rainforests, campers will learn about different species and create their own ecosystems.



Week 10: Sports Week: Rookies to MVP's:

Batter up! During sports week, campers will participate in different sports and sport-related activities! To officially make the week a slam dunk, they will face the Lindenhurst Park District staff in a kickball game!



Week 11: Camp Exploration is Out of this World!

As summer camp draws to a close, join Camp Exploration on an adventure that is out of this world! Campers will prepare for the ultimate space experience through games and activities and engage in expert-level science experiments.

CHEER & DANCE CAMPS

3-6
YEARS

Lindenhurst residents will
receive a 20% discount!

FUN WORKSHOPS WITH MRS. KAT

Get ready to join Mrs. Kat for her electrifying, stylish, and super FUN Dance Workshops! Picture yourself dancing to the latest hits, mastering cheer routines, and making new friends.

What to Bring:

Labeled Water Bottle
Small nut-free snack

What to Wear:

Shorts, T-shirt/tank, jazz shoes or
clean gym shoes

KPOP DEMON HUNTERS CAMP

\$90NR

Pre-schoolers and Kindergarteners jump into the popular world of KPop Demon Hunters as we learn fun dances, play movement games, create art and crafts related to the movie. Your child will build confidence in a high-energy, creative class designed to keep them moving! No dance experience needed. Costumes are encouraged.

Location: Studio A

Min/Max: 4/12

Reg. Deadline: Mon, June 8 or when full

M-F, 6/15-6/19, 1:00pm-2:30pm

KPOP
DEMON
HUNTERS



CRUEL SUMMER LITTLE SWIFTIES CAMP

\$90NR

Little Swifties! Join Mrs. Kat for a week full of fun, jazz, pop, and lyrical choreography, sing-a-longs, learning a steady beat through musical instruments, and creating arts and crafts! We will make our own special friendship bracelets and design a dress for T.S.! At the end of the week, we will perform a mini routine to the song "Cruel Summer" for the little Swifties' families! Taylor-inspired fashions are encouraged.

Location: Studio A

Min/Max: 4/12

Reg. Deadline: Mon, June 15 or when full

M-F, 6/22-6/26, 1:00pm-2:30pm

DANCE THE DAY AWAY BARBIE CAMP

\$72NR

You can be anything! Join us for a dance camp featuring a fun fashion show, Barbie-themed crafts, imaginative doll and scene play, and, of course, dance! Dancers will learn a micro-Barbie Movie disco dance! Barbie costumes are encouraged, or wear your favorite PINK outfit. Barbies will be provided, but bring your own if you like.

Location: Studio A

Min/Max: 4/12

Reg. Deadline: Mon, June 22 or when full

M-Th, 6/29-7/2, 1:00pm-2:30pm



TEA PARTY AND STUFFED ANIMAL CAMP

\$90NR

Campers will learn tea party etiquette, the "Please and Thank You Song," the "I'm a Little Teapot" dance, crafting and decorations, story time, and dress-up. We will also create mini "Stuffedie Stories" created especially for each dancer's plushie! Fun tea party hats, gloves, dress-up attire, and one labeled stuffed animal per dancer are encouraged.

Location: Studio A

Min/Max: 4/12

Reg. Deadline: Mon, July 6 or when full

M-F, 7/13-7/17, 1:00pm-2:30pm



CHEER CAMP

\$90NR



This Cheer Camp is designed to introduce your child to the basics of cheerleading. We will be focusing on building coordination, confidence, and teamwork through fun games, activities, chants, motions, dance, and jumps!

Location: Studio A

Min/Max: 4/12

Reg. Deadline: Mon, July 27 or when full

M-F, 8/3-8/7, 1:00pm-2:30pm

DANCE & MUSIC CAMPS

Lindenhurst residents will receive a 20% discount!

SING, DANCE, AND SHINE WITH MS. JIANNI!

DISNEY THROWBACK DANCE CAMP & MINI CAMP

6-12 years

Our Disney Throwback Dance Camp will feature a collection of dances inspired by your favorite Disney Channel Original Movies, including "Descendants" and "High School Musical". Participants will also learn original choreography to songs such as "Strut," "Determinate," and "What Dreams Are Made Of."

Location: Studio A

Min/Max: 4/12

The Disney Throwback Dance Mini-Camp will be an abbreviated version of the full week, focusing on choreography and singing 1-2 songs.

DISNEY THROWBACK CAMP

\$120NR

Reg. Deadline: Mon, June 15 or when full
M-F, 6/22-6/26, 9:00am-11:00am

DISNEY THROWBACK MINI-CAMP

\$56NR

Reg. Deadline: Mon, June 22 or when full
Sa, & Su, 6/27-6/28, 9:00am-11:00am



THIS IS WHAT DREAMS ARE MADE OF

What to Bring:

Water Bottle

Small nut-free snack

What to Wear:

Shorts, T-shirt/tank, jazz shoes or clean gym shoes

KPOP DANCE MINI CAMP

\$70NR

Do you have a KPop fan in your house who idolizes BLACKPINK, Twice, BTS, or the sensational Global Girl Group Katseye? Then the KPop Dance Camp is their dream come true! We'll dive into the basics of those catchy dances and tunes, making sure kids have a blast while grooving like a star!

Location: Studio A

Min/Max: 4/12

MINI CAMP 1

7-10 years

Reg. Deadline: Mon, July 6 or when full
Sa, & Su, 7/11-7/12, 9:30am-12:00pm

MINI-CAMP 2

10-15 years

Reg. Deadline: Mon, July 13 or when full
Sa, & Su, 7/18-7/19, 9:30am-12:00pm

KPOP DEMON HUNTERS



CHESS CAMP

5-12 years
Min/Max:
14/50
Activity 3

UNLEASH YOUR BRAIN POWER AND SPEND PART OF YOUR VACATION WITH CHESS WIZARDS!

Every camper gets to strut their stuff with a T-shirt, show off a shiny trophy, and crack open a puzzle folder! Don't worry about a thing, because Chess Wizards have got all the gear your kiddo needs to dive into the fun!

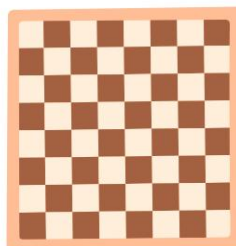


CHESS WIZARDS - HALF DAY AM \$300NR

Join us this summer for mornings full of challenging chess lessons, exciting games, and fabulous prizes. You'll improve your chess skills, meet new friends, and work out your most powerful muscle - your brain! Our morning sessions include fun team chess games like Corner Chess, recess, snacks, tournaments, and puzzles.

Reg. Deadline: Mon, July 6 or when full
M-F, 7/13-7/17, 9:00pm-12:00pm

Reg. Deadline: Mon, Aug. 3 or when full
M-F, 8/10-8/14, 9:00am-12:00pm



CHESS WIZARDS - HALF DAY PM \$300NR

Spend your summer afternoons with us, filled with challenging chess lessons, exciting games, and fabulous prizes. You'll improve your chess skills, meet new friends, and work out your most powerful muscle - your brain! Our afternoon sessions include fun team chess games like Corner Chess, recess, snacks, tournaments, and puzzles.

Reg. Deadline: Mon, July 6 or when full
M-F, 7/13-7/17, 12:00pm-3:00pm

Reg. Deadline: Mon, Aug. 3 or when full
M-F, 8/10-8/14, 12:00pm-3:00pm

AM and PM Half Day Campers need to provide a nut-free snack, and Full Day Campers need to provide a nut-free lunch.



CHESS WIZARDS - FULL DAY \$450NR

Join us this summer for a full day of challenging chess lessons, exciting games, and fabulous prizes. You'll improve your chess skills, meet new friends, and work out your most powerful muscle - your brain! Our full-day program includes fun team chess games like Corner Chess, recess, snacks, tournaments, and puzzles.

Reg. Deadline: Mon, July 6 or when full
M-F, 7/13-7/17, 9:00am-3:00pm

Reg. Deadline: Mon, Aug. 3 or when full
M-F, 8/10-8/14, 9:00am-3:00pm

SPORT CAMPS

BASKETBALL CAMPS

Monday-Friday

6/8-6/12

\$98NR

Community Center Gym-South Side

Min/Max: 8/20

Contr: 5 Star Sports

BASKETBALL

5-7 years

9:00am-10:30am

Get ready for an exciting introduction to basketball! This camp is designed for young players who are just starting their basketball journey. Through fun and engaging activities, campers will learn the basics of dribbling, passing, and shooting. Our experienced coaches focus on building confidence, teamwork, and a love of the game in a positive, supportive environment. Perfect for beginners eager to develop foundational skills while having a blast.

BASKETBALL

8-11 years

10:45am-12:15pm

Take your basketball skills to the next level! This camp is ideal for players looking to sharpen their game. Campers will work on improving their dribbling, shooting, and defensive techniques through age-appropriate drills and scrimmages. In addition to skill development, we'll emphasize teamwork, sportsmanship, and game strategy. Whether you're a seasoned player or looking to build your skills, this camp offers a fun and rewarding basketball experience!

BASKETBALL

11-14 years

12:30pm-2:00pm

Elevate your game with advanced skill-building and game strategy! This camp is designed for older players who are ready to refine their basketball skills and gain a deeper understanding of the sport. We'll focus on advanced drills, offensive and defensive strategies, and competitive gameplay. Our experienced coaches will help players improve their court awareness, leadership skills, and teamwork. Perfect for athletes looking to prepare for middle or high school basketball in a fun, challenging setting!

Lindenhurst residents receive a 20% discount!

TETRABRAZIL SOCCER

Monday-Friday

7/20-7/24

Engle Memorial Park Soccer Field

Classes scheduled outside will move indoors to the Community Center Gym if needed due to weather or field conditions

Min/Max: 10/20

Contr: TetraBrazil Soccer Academy

TetraBrazil Soccer Academy offers American players the opportunity to experience first-hand the kind of soccer training that has made Brazil the most successful soccer nation in the world. Teaching more than just techniques and tactics, each coach will bring an authentic taste of the flair, passion, and creativity of Brazilian soccer to camp.

HALF-DAY

6-16 years

9:00am-12:00pm

\$178NR

The youth program will give each player a solid foundation in the game's basic skills. Fun, skill refinement, and an introduction to the fundamentals of teamwork are given special attention.

FULL-DAY

8-16 years

9:00am-3:00pm

\$265NR

Skill training is still a primary element, but it is combined with a heavy emphasis on tactical understanding. Fun, mastery of advanced skills, and game tactics are given special attention. This is a unique program where players will learn all the Brazilian secrets!



CAMP LOCATIONS

Community Center Gym

2200 East Grass Lake Road

Engle Memorial Park Soccer Field

2200 East Grass Lake Road

Millennium Park Sand Volleyball

Courts

201 Country Plance Lane

SAND VOLLEYBALL CAMPS

Monday-Friday

NEW!

\$158NR

Millennium Park Sand Volleyball

Courts, Classes scheduled outside will move to the Community Center Gym if needed due to weather or court conditions

Min/Max: 8/20

Contr: Hot Shots Sports

Join us on the sand this summer to develop volleyball skills, strategy, and technique with the coaches of Hot Shots Sports! Players will receive a solid foundation on the fundamental skills of volleyball through fun and active drills. Daily scrimmages will allow players to use these skills in a game environment. Campers should bring a snack and water bottle each day. Every camper will receive a t-shirt!

VOLLEYBALL

7-9 years

9:00am-12:00pm

7/6-7/10

VOLLEYBALL

10-13 years

9:00am-12:00pm

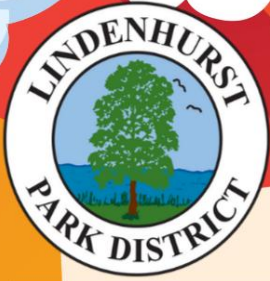
7/20-7/24



For more information, contact our Athletic Program Manager, Dylan Hebior at dhebior@lindenhurstparks.org or 847.356.6011 x 1006.



THEATRE CAMPS



Meet Ms. Jeanna, our Theatre Instructor

Jeanna Daebelliehn has captivated children and audiences alike throughout her extensive career as a performer, director, and choreographer with local theatre groups in northern Illinois and southern Wisconsin. Additionally, Jeanna is a committed educator within the Waukegan School District.

Come and join Ms. Jeanna to witness the enchanting magic she brings to the stage!



SUMMER 2026

- Dr. Seuss
- Mary Poppins
- Grease

Dr. Seuss



THEATRE CAMP

Dr. Seuss Seussical THE MUSICAL

M-F, July 6-10
9:00am-11:30am

Registration Deadline: Mon, June 29 or when full

4-8 years
\$171NR

Lindenhurst residents receive
a 20% discount!

COME SING AND DANCE WITHOUT A CARE!
COME SING AND DANCE EVERYWHERE!

Join us as we celebrate the whimsical world of Dr. Seuss through acting, singing, and dance. We will be featuring songs from "Seussical the Musical," a journey in which your favorite characters come to life. From the Cat in the Hat to Horton the Elephant, the musical brings Dr. Seuss's charming stories and vibrant characters to life. It's promised to be a rhyming good time filled with laughter, fun, and plenty of surprises!

Activity 1
Min/Max: 5/15
Inst: Jeanna Daebelliehn

*Parents will be treated to a
showcase performance on
the last day of camp, Friday,
July 10, at 11:30am in
Activity 1.*

*Please bring a water bottle and a
nut-free snack to camp.*

847.356.6011
www.lindenhurstparks.org

THEATRE CAMP

MARY POPPINS

M-F, July 13-17
9:00am-11:30am

Registration Deadline: Mon, July 6 or when full

5-10 years
\$171NR

Lindenhurst residents receive
a 20% discount!

**"WITH EVERY JOB THAT MUST BE DONE,
THERE'S AN ELEMENT OF FUN...AND SNAP!
THE JOB'S A GAME!"**

Get ready to jump into a magical world at our Mary Poppins Theatre Camp! You'll become part of the fun as you bring your favorite characters to life from this classic musical. Sing along to awesome songs like "It's a Jolly Holiday With Mary" and "Let's Go Fly a Kite."

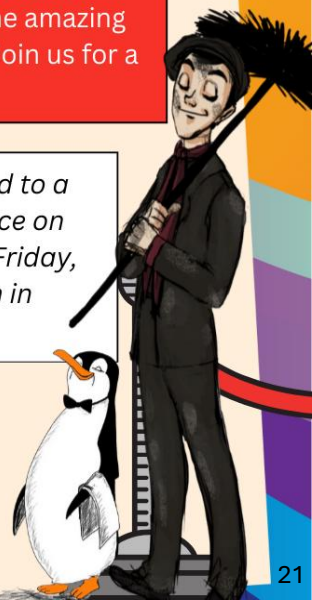
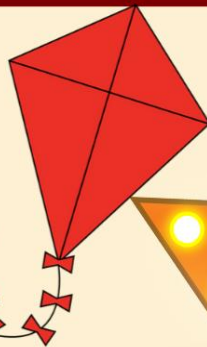
Every time you learn a new line or dance move, you'll feel the excitement of creativity and make new friends, just like the amazing adventures Mary, Bert, and the Banks kids have together. Join us for a magical time full of fun and laughter!

Activity 1
Min/Max: 5/15
Inst: Jeanna Daebelliehn

*Parents will be treated to a
showcase performance on
the last day of camp, Friday,
July 17, at 11:30am in
Activity 1.*

*Please bring a water bottle and a
nut-free snack to camp.*

847.356.6011
www.lindenhurstparks.org



THEATRE CAMP

GREASE

M-F, July 20-24
9:00am-11:30am

Registration Deadline: Mon, July 13 or when full

9-13 years
\$171NR

Lindenhurst residents receive
a 20% discount!

**TRAVEL BACK IN TIME TO THE 1950'S, WHEN
POODLE SKIRTS, ROLLED UP JEANS, AND
SLICKED BACK HAIR WERE COOL!**

This camp will concentrate on scenes, songs, and dances from the hit musical "Grease". Come join the T-birds and the Pink Ladies as they perform those popular hits like "Summer Nights", "Born to Hand Jive", and "Greased Lightning". This is sure to be a cool and rocking good time!

Activity 1
Min/Max: 5/15
Inst: Jeanna Daebelliehn

*Parents will be treated to a
showcase performance on the
last day of camp, Friday, July
24, at 11:30am in Activity 1.*

*Please bring a water bottle and a
nut-free snack to camp.*

847.356.6011
www.lindenhurstparks.org

2200 E. GRASS LAKE ROAD • LINDENHURST, ILLINOIS 60046
(847) 356-6011 • www.lindenhurstparks.org

☐ **Entered**

Last Name _____ **First Name** _____ **Home Phone** _____

Cell Phone _____ **Work Phone** _____ **E-Mail Address** _____

Address _____ **City** _____ **Zip Code** _____

Emergency Contact _____ **Emergency Telephone** _____

☐ Please check this box if you wish someone to contact you regarding special accommodations to participate in the program.

[illegible]

Would you like to donate to our participant scholarship? ☐ Yes ☐ No **\$1.00**

WAIVER AND RELEASE OF ALL CLAIMS

TOTAL

The Lindenhurst Park District ("District") is committed to conducting its recreation programs in a safe manner and holds the safety of participants in high regard. The District continually strives to reduce risks of injury and insists that all participants follow safety rules and instructions that are designed to protect the participant's safety. However, participants and parents / guardians of minors (collectively, "You") registering for this program / activity must recognize that there is an inherent risk of injury when choosing to participate in recreational activities / programs, including hazardous recreational activities.

You are solely responsible for determining if you or your minor child / ward are physically fit and / or skilled for the activities contemplated by this agreement. It is always advisable, especially if the participant is pregnant, disabled in any way or recently suffered an illness, injury or impairment, to consult a physician before undertaking any physical activity, especially in light of the physical requirements related to the particular activity for which you are registering.

WARNING OF RISK
Recreational activities / programs are intended to challenge and engage the physical, mental and emotional resources of each participant. Despite careful and proper preparation, instruction, medical advice, conditioning and equipment, there is still risk of serious injury (including exposure to a communicable disease) when participating in any recreational activity / program. Understandably, not all hazards and dangers can be foreseen. These risks are increased when you participate in hazardous recreational activities.

Depending on the particular activity, participants must understand that certain risks, dangers and injuries due to inclement weather, slipping, falling, poor skill level or conditioning, carelessness, horseplay, unsportsmanlike conduct, premises defects, inadequate or defective equipment, inadequate instruction or officiating, exposure to communicable disease and all other circumstances inherent to indoor and outdoor recreational activities / programs exist. In this regard, it must be recognized that it is impossible for the Lindenhurst Park District to guarantee absolute safety.

Please read this form carefully and be aware that in signing up and participating in this program / activity, you will be expressly assuming the risk and legal liability and waiving and releasing all claims for injuries, damages or loss which you or your minor child / ward might sustain as a result of participating in any and all activities connected with and associated with this program / activity (including transportation services / vehicle operation, when provided) and exposure to communicable disease.

I, THE UNDERSIGNED, RECOGNIZE AND ACKNOWLEDGE THAT THERE ARE CERTAIN RISKS OF PHYSICAL INJURY TO PARTICIPANTS IN THIS PROGRAM / ACTIVITY, THAT THIS ACTIVITY MAY BE CONSIDERED A HAZARDOUS RECREATIONAL ACTIVITY, AND I VOLUNTARILY AGREE TO ASSUME THE FULL RISK OF ANY AND ALL INJURIES, DAMAGES OR LOSS, REGARDLESS OF SEVERITY, THAT MY MINOR CHILD / WARD OR I MAY SUSTAIN AS A RESULT OF SAID PARTICIPATION. I FURTHER AGREE TO FULLY AND VOLUNTARILY WAIVE, RELEASE AND RELINQUISH ALL CLAIMS I OR MY MINOR CHILD / WARD MAY HAVE (OR ACCRUE TO ME OR MY CHILD / WARD) RESULTING FROM ANY AND ALL INJURIES, ILLNESSES, DAMAGES, OR LOSS THAT MY MINOR CHILD / WARD OR I MAY SUFFER AS A RESULT OF PARTICIPATING IN THIS PROGRAM / ACTIVITY OR USING DISTRICT PROPERTY AGAINST THE LINDENHURST PARK DISTRICT, INCLUDING ITS OFFICIALS, AGENT S, VOLUNTEERS AND EMPLOYEES (HEREINAFTER COLLECTIVELY REFERRED AS "DISTRICT PARTIES").

Photos are periodically taken in a class, during a special event or at the Districts parks. Please be aware that these photos are for District use only and may be used in the Districts print and Internet publications.

I have read and fully understand the above important information, warning of risk, assumption of risk and waiver and release of all claims. If registering on-line, your signature shall substitute for and have the same legal effect as an original signature.

PLEASE PRINT: Participant's Name _____ Date _____

Participant's Signature (18 years or older or Parent / Guardian): _____

PARTICIPATION WILL BE DENIED If the signature of adult participant or parent / guardian and date are not on this waiver.

TOTAL ENCLOSED \$ _____ ☐ **Cash** ☐ **Check #** _____ ☐ **Visa** ☐ **MasterCard** ☐ **Discover**

Credit Card Number: _____ **CCV:** _____ **Exp. Date:** _____