

Winter
Spring
2026



Active Adults
Program Guide
Registration Begins
12.1.2025



Out & About



Active Adults
Luncheon-
Safety Starts
at Home
Fri, Feb. 5

Trips!
Jan.-May

Lunch and a
Movie is Back!

Weekly Drop-In
Active Adult
Activities



NEW Active Adult
Work Outs!

847.356.6011
lindenhurstparks.org

Lindenhurst Park District Board of Park Commissioners



Todd Solbrig
President



Victoria McCabe
Vice President



James Stout
Treasurer



Sean Smith
Commissioner



Sheri Chapman
Commissioner

Lindenhurst Park District has a five (5) member Board. Board members are unpaid and elected to six (6) year-term positions. Park Board members must reside within the Park District boundaries. Primarily, the Park Board establishes policies based on sound research and consideration of community needs. They adopt policies that allow the Park District to run efficiently, effectively, legally, and ethically. They request, receive, evaluate, and make decisions based on guidance from the Executive Director. Lindenhurst Park District encourages public interaction and believes in being actively involved in our community.

Board Meetings

Regular meetings of the Park Board of Commissioners are held on the second Tuesday of each month at 6:00pm at the Lindenhurst Park District. The public is always invited to attend. If you want to address the board, please contact Dave Mohr Jr., Executive Director, at 847.356.6011 x 1003 or dmohr@lindenhurstparks.org.

About Us

Lindenhurst Park District is located in northwestern Lake County, Illinois. The District was formed on April 15, 1988. A five-member, non-paid elected board establishes district policy and provides direction on program and facility development. Our current park board has over 60 years of combined experience. We have a supporting cast of local individuals, organizations, government, and businesses, allowing our Park District to move forward progressively and accomplish improvements beneficial to you. Recreational opportunities continue growing with 19 named park sites, two beaches, 15 playgrounds, and 25 parcels of open space, totaling 134.5 acres, which offer great active features combined with designated passive/natural areas. We operate a 31,000 sq. ft. Community Center with a full-size gymnasium, 3-lane suspended walking/jogging track, aerobic and dance studios, senior/active adult room, preschool, multi-purpose and activity rooms, offices, and more, all ADA accessible. We have also made improvements at each named park and beach site within the decade, under a tax cap and without a referendum.

Registration and Administrative Offices

Thomas J. Lippert Community Center
2200 East Grass Lake Road • Lindenhurst, Illinois 60046

Contact

Email info@lindenhurstparks.org
Main Line 847.356.6011

In-Person Registration Hours

M-F, 9:00am-4:00pm

Office Closed

New Year's Day – Thursday, January 1, 2026
President's Day – Monday, February 16, 2026
Memorial Day – Monday, May 25, 2026



GET SOCIAL
WITH US!

WWW.LINDENHURSTPARKS.ORG | [FACEBOOK](#) | [INSTAGRAM](#)



Website-Lindenhurstparks.org

Register for a class, learn about new programs, check out our calendar, and see Park District updates.

Facebook/Instagram

Stay informed about events and programs and see our participants in action by following, liking, and using the hashtag #lindenhurstparkdistrict.



Why travel when the best programs are right here at home!

Love our programs, but spotted a lower price elsewhere?

If another Park District or Parks and Recreation Department offers a **comparable class** with the same age, time, and number of sessions for a lower fee, we'll **match their price**. It's our way of keeping recreation local, affordable, and welcoming to everyone!

How it Works: Find a similar program at a lower cost and show us the lower price, and we'll match it, it's simple as that! Creating Community through People, Parks, and Programs... Now with a Best Price Guarantee!

How Do I Register

Online
REGISTRATION

Visit our website at
www.lindenhurstparks.org.

In-Person
REGISTRATION

Lindenhurst Park District
M-F, 9:00am-4:00pm
2200 East Grass Lake Road
Lindenhurst, Illinois 60046

Mail-In
REGISTRATION

Lindenhurst Park District
Att: Registration
2200 East Grass Lake Road
Lindenhurst, Illinois 60046

Email
REGISTRATION

Email a completed registration form and waiver to
registration@lindenhurstparks.org.

This Way To Fun!



Save Time & Register Online!

REGISTRATION
BEGINS AT 9AM
12.1.2025
RESIDENT & NON-RESIDENT
Park District residents receive a 20% discount off most listed prices!

Are you a **NEW** Lindenhurst Park District resident? Set up your resident discount by calling the office before registering online at 847.356.6011.

How to Create a New Client Account

If you do not have an account, go to our website at www.lindenhurstparks.org.

1. Click on the **Registration Tab**.
2. Choose an activity to register for and click **"Create an account"** on the bottom left of the pop-up window. The account must belong to an adult 18 years or older.
3. You will receive an email confirmation that your account was successfully created. This email must be validated to activate your account information.
4. Lindenhurst residents must call before they register to receive the resident discount.

Log-in to an Existing Account

Once your account has been activated you can access it by going to www.lindenhurstparks.org selecting the **"My Account"** tab and clicking **"Log-in"** or choose the activity you want to register for and you will be prompted to log-in.

Your email address is your username. If you forget your password, reset with your username or choose to log in via Facebook, Google, or Office 365.

How Do I Pay?

Register online using Visa, MasterCard, American Express or Discover. For in-person or mail-in registration, cash, check, or charge payments may be made. Checks should be made payable to Lindenhurst Park District. There will be an automatic \$25.00 service charge on all returned checks and credit cards with insufficient funds.

Refund Policy

To receive a refund, you must withdraw from a program at least 7 days prior to the start. Program refunds will be less a \$5 service charge for programs under \$99 or a \$10 service charge for programs over \$100. Withdrawals within one week of the start date will only be refunded for medical reasons or relocation. Full refunds will be given when the district cancels programs due to low registration. Refunds will be processed within 14 days of request. Please note that all refunds will be processed as a household credit. Trips, one-time programs, and special event refunds will be less prepaid costs such as tickets, admission, and meals regardless of withdrawal date.

Lindenhurst residents receive a 20% discount!
Excluding Pickleball League

Adult Pickleball - Beginners

18+
\$90NR

This class is for those who have never played Pickleball before or who have very limited experience with the sport. It will focus on Pickleball basics such as forehand and backhand shots, serving, and court positioning. Players will also learn the scoring and rules of the game through drills and playing time. The slower pace of this class will give players the opportunity to develop the skills needed to play this fun and energetic game. Please provide your own paddle.

Location: Community Center Gym
Min/Max: 6/12
Contr: 5 Star Sports

F	1/9-2/13	5:45p-6:30p	6 classes
F	2/27-4/10	5:45p-6:30p	6 classes
no class 3/27			
F	4/24-5/29	5:45p-6:30p	6 classes



Adult Pickleball - Intermediates

18+
\$90NR

This class is designed for advanced beginners with some experience who want to progress at a faster pace to enhance their fundamental shots and strategies. Players will participate in challenging drills to work on consistency in forehand and backhand shots, serving, volleying, dinks, and lobs. Through matches played each week, players can take their game to the next level by learning how to play smarter, not harder. Please bring your own paddle.

Location: Community Center Gym
Min/Max: 6/12
Contr: 5 Star Sports

F	1/9-2/13	6:30p-7:15p	6 classes
F	2/27-4/10	6:30p-7:15p	6 classes
no class 3/27			
F	4/24-5/29	6:30p-7:15p	6 classes

Adult Pickleball W/S 2026

Doubles League



Prepare for some exciting action! Pickleball combines elements of badminton, tennis, and ping pong, and it's quickly gaining popularity worldwide. Join our exhilarating 9-week doubles league, featuring playoffs, and make sure to bring your paddles! Teams will compete in one match each evening at either 6:00 pm, 7:00 pm, or 8:00 pm, with timings based on the number of participants. Only one team member needs to register. Let the pickleball fun commence! The schedule will be released on March 2, 2026.



\$165 PER TEAM

MARCH 9-MAY 4
5:30-8:30PM

Reg. Deadline: Fri, 2/27 or when full

Location: Community Center Gym
Day: Mondays
Min/Max: 6/12 Teams



LINDENHURST PARK DISTRICT

ADULT PICKLEBALL TOURNAMENT

SUN, FEB. 22, 2026

REG. DEADLINE: THUR, 2/19

FIRST GAME STARTS AT 9:00 AM

Think you have what it takes to win?
Join us for our third annual Adult
Pickleball Tournament and find out!



MIN/MAX: 8/10 TEAMS
DAY: SUNDAY

Bring your own paddles!



\$50
PER TEAM

PRIZES WILL BE
AWARDED TO THE
WINNING TEAM!



18+

Registration is per TEAM. During registration, you will be asked to specify your partner's name and team's name.

Review official rules at:
<https://usapickleball.org/what-is-pickleball/scoring-position/>

**LINDENHURST PARK DISTRICT
COMMUNITY CENTER GYM**

2200 E. GRASS LAKE ROAD, LINDENHURST

REGISTER AT
WWW.LINDENHURSTPARKS.ORG



The tournament will be double elimination; each team is guaranteed two games. The tournament schedule will be emailed to the "Captains" one week prior to the tournament date.

Questions? Call us at
847.356.6011

Lindenhurst residents will receive a 20% discount!



The Secret Society of Supper Clubs

21+
\$17NR

A celebration of good food, great drinks, and timeless hospitality, this secret society brings together enthusiasts who appreciate the art of the supper club experience. United by a love for hearty, made-from-scratch meals. Whether it's the sizzling steaks, golden fish fries, or buttery sides like creamed corn and mashed potatoes. The society takes pride in the ritual of the classic *Old Fashioned* cocktail, served the Wisconsin way: brandy bitters, and a cherry, all enjoyed in good company before a hearty meal. It's not just about the food or the drink – it's also about connecting with the legacy of Wisconsin's supper clubs and savoring the nostalgia of simpler times. Fresh bread, classic cocktails, and laughter fill the air as each gathering is an opportunity to rediscover the joy of a night out, just like generations before.

It's more than a club – it's a movement to keep the tradition alive, ensuring that future generations can continue to enjoy the warmth, flavor, and community that only a true supper club can provide.

This trip includes transportation on the Park District bus. Food and drink are on your own.

Location: Meet at the Lindenhurst Park District

The Colony House-Trevor, WI
Reg. Deadline: Thur, Feb. 12, or when full
Th Feb. 19 3:30p-6:00p Min/Max: 7/14

The Butterfly Club-Beloit, WI
Reg. Deadline: Thur, Apr. 30, or when full
Th May 7 3:45p-8:00p Min/Max: 7/14





Cooking Class

With Tony Cannoli



Learn How to Make Fresh Cannoli

Join Tony Cannoli for a sweet and unforgettable culinary experience!

Fresh Made Cannoli

18+
\$50NR

In this hands-on class, Tony will guide you step-by-step through the art of making fresh, authentic cannoli. Learn how to roll, form, fry, and fill cannoli dough, just like the pros! Each participant will create three crisp cannoli shells and fill them with their choice of Tony Cannoli's signature fillings. It's the perfect way to kick off a date night with your significant other or an evening out with friends.



What's Included

- Step-by-Step instructions from Tony Cannoli
- All ingredients and tools
- Create 3 fresh cannoli to take home or enjoy on the spot
- Choice of signature cannoli fillings



Spots are limited – register early to reserve your spot! Bring your appetite and get ready for a fun, flavorful experience.

Location: Grayslake Park District
Multipurpose Room A
240 Commerce Drive
Min/Max: 2/6
Contr: Tony Cannoli



Reg. Deadline: Wed, Jan. 7 or when full
W Jan. 14 6:00p-7:30p 1 class
Reg. Deadline: Mon, Mar. 9 or when full
M Mar. 16 6:00p-7:30p 1 class



Looking for a fun and engaging way to spend your time? If you're an active adult over the age of 50+, we invite you to join us for our weekly drop-in activities, exciting trips, and more! Whether you're looking to make new friends, stay active, or simply try something new, we have something for everyone. So why not come and join us today? We can't wait to meet you!

Active Adult Activity Pass

Get your Active Adult Activity Pass (60 and older only) to join the fun! The Activity Pass gives you access to our Drop-In activities, including using the walking track and fitness equipment, **BEFORE OR AFTER** Video Aerobics and Cards. The Activity Pass is \$20 for residents and \$25 for non-residents and is valid for the current calendar year 2026. Purchase your pass at the registration desk during regular business hours (9:00am-4:00pm) and take advantage of the fun. Not ready to commit? Pay just \$1 per drop-in activity!

Do you have a suggestion for a drop-in program or a trip? We'd love to hear your ideas! Contact us at 847.356.6011.

Drop-In Programs
No Registration Required

- Video Aerobics-Drop-In
Energize your day and enhance your balance, flexibility, and cardiovascular health with a low-impact workout. Our program features diverse fitness videos designed to accommodate all abilities.
M/W/F 9:00am-10:00am, Studio A
Fee: Activity Pass or \$1 per visit
- Cards-Drop-In
Come join this lively community for some enjoyable competition! This engaging group gathers weekly to play a variety of games, including Canasta and Hand, Foot and Knee. Bring a friend and your favorite game. Remember to pack some snacks for lunch in case you get hungry.
Th 10:00am-4:00pm, Activity 3
Fee: Activity Pass or \$1 per visit

**50+**
Quarterly
ACTIVE ADULT LUNCHEON

**SAFETY STARTS AT HOME**

**Lake Villa**
Fire Protection District

Friday, February 6
11:30am-1:00pm
Lindenhurst Park District
Community Center
Activity 3

Registration Deadline is Tu, Feb. 3

\$10R/NR
per person
not eligible for discount

Join us for an Informative and engaging luncheon with the Lake Villa Fire Protection District as we learn valuable tips to keep our homes and families safe. During this session, fire safety experts will cover important topics including:

- Kitchen safety best practices
- The importance of working smoke alarms
- Creating and practicing home exit plans
- General home safety tips to prevent accidents and emergencies

The program will also include time for an open Q&A session, giving you the chance to ask questions and receive guidance directly from the professionals who help keep our community safe.

Enjoy a delicious lunch while gaining practical knowledge to protect your home and loved ones.
Advanced registration is required. Register online or by calling 847.356.6011.

Lindenhurst residents will receive \$5 off each session!

ACTIVE ADULT PROGRAMS - WORK OUT!

Studio A, Min/Max: 6/12, Instr: Randi Binstock

New!

Chair Yoga: Move, Breathe, and Thrive
50+
\$64NR
This beginner-friendly class invites adults 50+ to explore yoga in a safe, supported way. Working in and out of a chair, you'll flow through movements that promote strength, flexibility, and relaxation without strain or discomfort.

Reg. Deadline: Thur, Jan. 8, or when full
Th 1/15-2/19 9:00a-10:00a 6 Classes
Reg. Deadline: Thur, Feb. 26, or when full
Th 3/5-4/16 9:00a-10:00a 6 classes
no class 3/26

Yoga: Gently flow for Vitality
50+
\$64NR
Rediscover your strength, flexibility, and balance in this beginner-friendly yoga class designed for adults 50+. With mindful movement, breath awareness, and gentle transitions, you'll build confidence and ease in your body - whether you're new to yoga or returning after a break. Modifications and props will be provided. Must have the ability to get up and down from the floor.

Reg. Deadline: Thur, Jan. 8, or when full
Th 1/15-2/19 10:30a-11:30a 6 Classes
Reg. Deadline: Thur, Feb. 26, or when full
Th 3/5-4/16 10:30a-11:30a 6 classes
no class 3/36

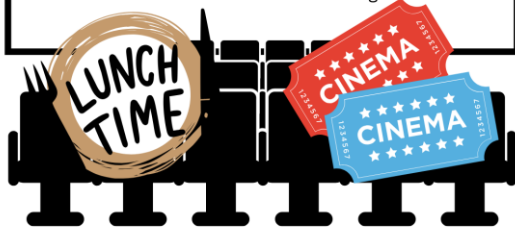


Active Adults Trips...

Join us for some adventures this season!
Our trips are a fun and easy way to make
the most of your time! We've planned trips
that will delight all your senses this season!

Lunch and a Movie

What better way to end a busy week than with lunch and a movie with friends? Each outing, we will travel to a different location to have lunch and enjoy a movie. The movie choice, a current blockbuster, will be communicated after the registration deadline. The trip includes transportation by Park District bus and a movie ticket. Lunch will be on your own at the restaurant. Minimal Walking.



Lunch at Around the Clock Restaurant & Movie at Regal Cinemas

Crystal Lake, IL
50+
\$20NR



Start your afternoon with a delicious meal at Around the Clock Restaurant, known for their big portions of satisfying comfort food and delicious desserts from their in-house bakery. After lunch, head over to the nearby Regal Cinemas Crystal Lake for a movie. With comfortable seating and the latest blockbusters on the screen, it's the perfect way to relax after your meal and enjoy a cinematic experience.

Reg. Deadline: Mon, Jan. 19 or when full
F Jan. 23 10:00a-3:30p Min/Max: 6/14

Lunch at El Puerto & Movie at Classic Cinemas

Fox Lake, IL
50+
\$20NR



Kick off your day with a stop at El Puerto, a venue known for its great food and beautiful view of Nippersink Lake. Enjoy authentic Mexican food prepared according to long-held family recipes, using fresh ingredients from local vendors and herbs and spices. After a satisfying meal, head over to the Classic Cinemas for a movie. Relax in their comfortable recliner seats and enjoy the latest films on the big screen for the perfect afternoon out.

Reg. Deadline: Mon, Apr. 20 or when full
F Apr. 24 10:30a-3:30p Min/Max: 6/14

Trip Information

Transportation is provided by a Park District bus (unless otherwise noted). Fees are per person. The return times are approximate. **Lindenhurst residents will receive \$5 off each Active Adult Trip.**

Trip Refund Policy

Refunds are only given under the following circumstances:

- A full refund will be given if the Park District cancels the trip.
- A refund, less a cancellation fee, will be given if the spot can be filled.
- A refund, less a cancellation fee, and any pre-paid costs will be given when you withdraw at least 7 days prior to the trip.
- Withdrawals within 7 days of the trip will only be refunded for medical or relocation reasons and will be less a cancellation fee and pre-paid costs. *Pre-paid cost may consist of tickets, admission, meals, and/or supplies.*

The Play That Goes Wrong

Arlington Heights, IL
50+
\$75NR



Part Monty Python, part Sherlock Holmes, The Play That Goes Wrong is an Olivier-Award-winning gut-busting global sensation that is guaranteed to leave you aching from laughter. In this farcical fiasco of a show, a bungling troupe of thespians attempts to stage a 1920s WHODUNIT murder mystery. Instead, these accident-prone actors trip over everything, including their lines, and things quickly go from bad to absolutely disastrous. From a fainting femme to a corpse that can't quite croak, The Play That Goes Wrong features everything you never wanted in a show. Will these avocational actors even make it to the final curtain? See this wildly entertaining, side-splitting show and find out! We will enjoy lunch in downtown Arlington Heights before the 2 PM performance.

This trip includes transportation by Park District bus, lunch, and theatre ticket. Lunch will be on your own. **Minimal walking and standing.**

Reg. Deadline: Thur, Feb. 12 or when full
Th Mar. 5 10:30a-5:30p Min/Max: 6/14



Active Adults Trips...

For more details or if you have questions, call us at 847.356.6011.

Maple Syrup Hike & Local Treasures

Libertyville & Riverwoods, IL

50+

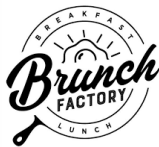
\$55NR

We will start our morning at the Dunn Museum, where we will learn from exhibits showcasing Lake County's rich history, culture, and art. After the museum, we'll enjoy a hearty lunch at The Brunch Factory before heading to Ryerson Woods to experience the sweetness of the season with a guided Maple Syrup Hike, led by the Lake County Forest Preserves. Learn how maple sap is collected and transformed into syrup as you stroll through the scenic woodlands. This trip is a perfect blend of nature, favor, and discovery!

This trip includes transportation by Park District bus, hike, lunch, and museum ticket. **Minimal to moderate walking and standing.**

Reg. Deadline: Thur, Mar. 13 or when full

F Mar. 20 9:30a-3:30p Min/Max: 6/11



Grohmann Museum and MKE Public Market

Milwaukee, WI

50+

\$20NR



Spend the day exploring two of Milwaukee's most popular destinations! We'll begin at the Grohmann Museum, home to an impressive collection of art celebrating the evolution of human work. Our guided tour will cover all four floors of the museum. After enjoying the exhibits, we'll head to the lively Milwaukee Public Market for the afternoon, where you'll have time to browse unique shops, sample local foods, eat lunch, and take in the vibrant atmosphere. This trip offers the perfect mix of culture, history, and culinary delights.

This trip includes transportation by Park District bus and museum ticket. Lunch is on your own. **Moderate walking and standing.**

Reg. Deadline: Wed, Apr. 8 or when full

Tu Apr. 14 8:00a-3:00p Min/Max: 6/14

Cantigny Park

Wheaton, IL

50+

\$70NR



Enjoy the vibrant seasonal charm of Cantigny Park as you stroll through its stunning landscapes. Whether you wander up to Butterfly Hill, pause by Gold Pond, or take in the sweeping views at Prairie View, you're sure to be delighted by all that spring brings to the gardens. Explore the Tank Park at your own pace, and take time to visit The First Division Museum, which tells the remarkable story of the U.S. Army's 1st Infantry Division. The museum's First in War gallery follows the "Big Reg One" from World War I through the Vietnam War. This historic division was the first American unit sent to France during World War I, among the first to arrive in Europe during World War II, and again among the first deployed to Vietnam in 1965. Between those conflicts, the division served on occupation duty before returning stateside in 1955. Before visiting Cantigny Park, we'll enjoy lunch at The Ivy Restaurant. Menu details will be provided close to the trip date.

This trip includes transportation by Park District bus, lunch, and Park admission. **Moderate to extensive walking and standing.**

Reg. Deadline: Wed, Apr. 15 or when full

W Apr. 29 10:00a-6:30p Min/Max: 6/14

Sand Bluff Bird Observatory & Anderson Japanese Gardens

Rockton, IL

50+

\$92NR

Sand Bluff Bird Observatory in Rockton, Illinois, is one of the largest small-bird banding operations in the country, and we'll have the opportunity to watch the banding process in action. Sand Bluff was created to study population trends in migrant birds, known as neo-trops, although it also traps resident species. In a typical year, 4-6,000 warblers, vireos, orioles, sparrows, thrushes, and finches are banded. The data they collect is vital in helping scientists and the government understand the current status of these birds, both nationally and internationally. We are currently planning to have lunch at Fresco At The Gardens; however, the location may change. The afternoon will hold a docent-led 2-hour tour of the Anderson Japanese Gardens. The gardens began in 1978 and were designed by Hoichi Kurisu. From groundbreaking to today, the placement of every rock, the alignment of every tree, and the layout of all paths have been made with careful consideration by Mr. Kurisu. This will be a day grounded in nature, with a fair amount of walking along the garden paths, which have seating.

This trip includes transportation by Park District bus, donation to the Observatory, lunch, and guided tour. **Moderate to Extensive walking and standing.**



Reg. Deadline: Thur, Apr. 30 or when full

Th May 21 7:00a-5:45p Min/Max: 6/14



Take a walk or run on our suspended track or workout on our fitness equipment, which includes two elliptical machines, a row machine, a range of dumbbell free weights (from 5 to 50 lbs), and an incline/decline bench. We also have stretching mats and lockers for your items. Our track is 15 laps per mile.

Our monthly Fitness Center & Track Schedule is available at www.lindenhurstparks.org/facilities/gymnasium.

Times are subject to change due to programming or special events.

"STEP UP YOUR GAME" - WALKING CHALLENGE



CRUSH YOUR GOALS!

January 2-31

Get Fit, Get Strong, Get Healthy

Ready to jumpstart the new year by leveling up your fitness game?



Lace up those sneakers and strut your stuff in our "Step Up Your Game" Walking Challenge this January!



TO PARTICIPATE

- Register at the front desk and receive your January schedule.
- The challenge is to keep track of your daily walking progress throughout the month.
- It's on the honor system, so make sure to keep an accurate record of your laps or miles walked.
- At the end of the month, turn in your completed calendar, and the participant with the most miles or laps will win a PRIZE!
- Only walking at the LPD track counts towards your progress.
- Lindenhurst Park District, Indoor Track, 2200 E. Grass Lake Rd.

- Sign in and pay at the registration desk during business hours (M-F, 9am-4pm) or with the Building Attendant after 4pm and on the weekends.
- No children under the age of 10 are allowed on the track or fitness area. Children 10-13 years of age must be accompanied by an adult.

- Yearly Pass-Fitness & Track**
 60+ \$148
 Up to 59 years \$247
- 30 Visit Pass-Fitness & Track**
Pass expires 90 days after purchase.
 60+ \$22
 Up to 59 years \$35
- Daily Fees-Fitness & Track**
 60+ \$1
 Up to 59 years \$2

Registration Form
LINDENHURST PARK DISTRICT
 2200 E. GRASS LAKE ROAD • LINDENHURST, ILLINOIS 60046
 (847) 356-6011 • www.lindenhurstparks.org
PLEASE PRINT

☐ **Entered**

Primary Guardian
 Last Name _____ First Name _____ Home Phone _____

Cell Phone _____ Work Phone _____ E-Mail Address _____

Address _____ City _____ Zip Code _____

Emergency Contact _____ Emergency Telephone _____

☐ **Please check this box if you wish someone to contact you regarding special accommodations to participate in the program.**

Participant's Name	Sex	Age	Birthdate	Grade	Activity Title	Date(s) of Activity	Day(s)	Time	Fee

Would you like to donate to our participant scholarship? ☐ Yes ☐ No **\$1.00**

WAIVER AND RELEASE OF ALL CLAIMS

TOTAL

IMPORTANT INFORMATION

The Lindenhurst Park District ("District") is committed to conducting its recreation programs in a safe manner and holds the safety of participants in high regard. The District continually strives to reduce risks of injury and insists that all participants follow safety rules and instructions that are designed to protect the participant's safety. However, participants and parents / guardians of minors (collectively, "You") registering for this program / activity must recognize that there is an inherent risk of injury when choosing to participate in recreational activities / programs, including hazardous recreational activities.

You are solely responsible for determining if you or your minor child / ward are physically fit and / or skilled for the activities contemplated by this agreement. It is always advisable, especially if the participant is pregnant, disabled in any way or recently suffered an illness, injury or impairment, to consult a physician before undertaking any physical activity, especially in light of the physical requirements related to the particular activity for which You are registering.

WARNING OF RISK

Recreational activities / programs are intended to challenge and engage the physical, mental and emotional resources of each participant. Despite careful and proper preparation, instruction, medical advice, conditioning and equipment, there is still risk of serious injury (including exposure to a communicable disease) when participating in any recreational activity / program. Understandably, not all hazards and dangers can be foreseen. These risks are increased when You participate in hazardous recreational activities.

Depending on the particular activity, participants must understand that certain risks, dangers and injuries due to inclement weather, slipping, falling, poor skill level or conditioning, carelessness, horseplay, unsportsmanlike conduct, premises defects, inadequate or defective equipment, inadequate instruction or officiating, exposure to communicable disease and all other circumstances inherent to indoor and outdoor recreational activities / programs exist. In this regard, it must be recognized that it is impossible for the Lindenhurst Park District to guarantee absolute safety.

WAIVER AND RELEASE OF ALL CLAIMS AND ASSUMPTION OF RISK

Please read this form carefully and be aware that in signing up and participating in this program / activity, you will be expressly assuming the risk and legal liability and waiving and releasing all claims for injuries, damages or loss which you or your minor child / ward might sustain as a result of participating in any and all activities connected with and associated with this program / activity (including transportation services / vehicle operation, when provided) and exposure to communicable disease.

I, THE UNDERSIGNED, RECOGNIZE AND ACKNOWLEDGE THAT THERE ARE CERTAIN RISKS OF PHYSICAL INJURY TO PARTICIPANTS IN THIS PROGRAM / ACTIVITY, THAT THIS ACTIVITY MAY BE CONSIDERED A HAZARDOUS RECREATIONAL ACTIVITY, AND I VOLUNTARILY AGREE TO ASSUME THE FULL RISK OF ANY AND ALL INJURIES, DAMAGES OR LOSS, REGARDLESS OF SEVERITY, THAT MY MINOR CHILD / WARD OR I MAY SUSTAIN AS A RESULT OF SAID PARTICIPATION. I FURTHER AGREE TO FULLY AND VOLUNTARILY WAIVE, RELEASE AND RELINQUISH ALL CLAIMS I OR MY MINOR CHILD / WARD MAY HAVE (OR ACCRUE TO ME OR MY CHILD / WARD) RESULTING FROM ANY AND ALL INJURIES, ILLNESSES, DAMAGES, OR LOSS THAT MY MINOR CHILD / WARD OR I MAY SUFFER AS A RESULT OF PARTICIPATING IN THIS PROGRAM / ACTIVITY OR USING DISTRICT PROPERTY AGAINST THE LINDENHURST PARK DISTRICT, INCLUDING ITS OFFICIALS, AGENTS, VOLUNTEERS AND EMPLOYEES (HEREINAFTER COLLECTIVELY REFERRED AS "DISTRICT PARTIES").

Photos are periodically taken in a class, during a special event or at the Districts parks. Please be aware that these photos are for District use only and may be used in the Districts print and Internet publications.

I have read and fully understand the above important information, warning of risk, assumption of risk and waiver and release of all claims. If registering on-line, your signature shall substitute for and have the same legal effect as an original signature.

PLEASE PRINT: Participant's Name _____ Date _____

Participant's Signature (18 years or older or Parent / Guardian): _____

PARTICIPATION WILL BE DENIED If the signature of adult participant or parent / guardian and date are not on this waiver.

TOTAL ENCLOSED \$ _____ ☐ **Cash** ☐ **Check #** _____ ☐ **Visa** ☐ **MasterCard** ☐ **Discover**

Credit Card Number: _____ **CCV:** _____ **Exp. Date:** _____