

# Summer 2024

## Active Adults Program Guide

# Out & About



Weekly Drop-In  
Active Adult  
Activities

**New!**  
Active Adults  
Quarterly  
Luncheons

Trips!  
June-August



847.356.6011  
lindenhurstparks.org



## WISH LISTS!

*Wish Lists allow you to bookmark your favorite activities before registration begins and pick up where you left off when you are ready. This is a great way to save activities you may be unsure of registering for or save them ahead of time so you can find and register as soon as registration opens!*

## How Do I Register

### Online REGISTRATION

Visit our website at [www.lindenhurstparks.org](http://www.lindenhurstparks.org) for a Registration Help Guide.



### In-Person REGISTRATION

Lindenhurst Park District  
M-F, 9:00am-4:00pm  
2200 East Grass Lake Road  
Lindenhurst, Illinois 60046

### Drop Box REGISTRATION

After office hours-Drop Box located to the right of the front door (upper parking lot)



## Easy Ways!

### Mail-In REGISTRATION

Lindenhurst Park District  
Att: Registration  
2200 East Grass Lake Road  
Lindenhurst, Illinois 60046

### Email REGISTRATION

Email a completed registration form and waiver to [registration@lindenhurstparks.org](mailto:registration@lindenhurstparks.org).

### Are You R (resident) or NR (non-resident)?

Resident rates apply to people residing within the Lindenhurst Park District boundaries who contribute financial support to the Park District through property taxes. Non-residents live outside the Lindenhurst Park District boundaries and are always welcome. The easiest way to check your residency is to look at your county tax bill (check for Park District taxes paid). The Park District will ask for proof of residence to establish your discount.

For more details or if you have questions, please contact Allison Tibor at 847.356.6011 or [atibor@lindenhurstparks.org](mailto:atibor@lindenhurstparks.org).

## REGISTRATION

BEGINS AT 9AM

5.6.24

RESIDENT & NON-RESIDENT

Save Time & Register Online!

### How to Create a New Client Account

If you do not have an account, go to our website at [www.lindenhurstparks.org](http://www.lindenhurstparks.org).

1. Click on the **Registration Tab** then click on **Register Now!**
2. Choose an activity to register for and click **"Create an account"** on the bottom left of the pop-up window. The account must belong to an adult 18 years or older.
3. You will receive an email confirmation that your account was successfully created. This email must be validated to activate your account information.

### Log-in to an Existing Account

You can access your account several ways once it has been activated. Go to our website at [www.lindenhurstparks.org](http://www.lindenhurstparks.org).

You Can Either:

- Under the **Contact Us tab**, select **My Account**.

-You can also choose an activity to register for, and you will be prompted to log-in.

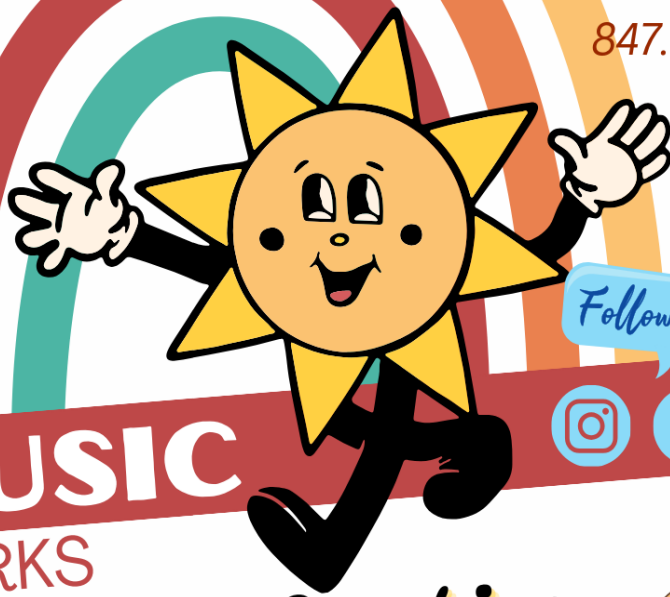
-Remember that your email address is your user-name. If you forget your password, you can reset it once you log-in with your user-name or choose to log in via Facebook, Google, or Office 365.

### How Do I Pay?

Register online using Visa, MasterCard, American Express or Discover. For in-person, mail-in, or Dropbox, cash, check, or charge payments may be made. Checks should be made payable to the Lindenhurst Park District. There will be an automatic \$25.00 service charge on all returned checks and credit cards with insufficient funds.

### Refund Policy

To receive a refund, you must withdraw from a program at least 7 days prior to the start. Program refunds will be less a \$5 service charge for programs under \$99 or a \$10 service charge for programs over \$100. Withdrawals within one week of the start date will only be refunded for medical reasons or relocation and will be pro-rated. Full refunds will be given when the district cancels programs due to low registration. Refunds will be processed within 14 days of request. Please note all refunds will be processed as a household credit. Trips and special event refunds will be less prepaid costs such as tickets, admission, and meals. See the Active Adult refund policy on page 4.



# LIVE MUSIC

IN THE PARKS

## Walking On Sunshine

### 2024 SCHEDULE

Wednesdays 7-8:30pm

#### June

- 5 GooRoos - 90's-Now/PP
- 12 Johnny Russler & The Beach Bum Band - Jimmy Buffet/LM
- 19 Infinity - Rock Music Classic-Current/PP
- 26 Soda - Classic Cover Band/LVDL

#### July

- 3 Nashville Electric Company - Country/CP
- 10 Judson Brown Band - Country & Rock Pop/LM
- 17 Rosie & The Rivets - 50's/60's Rock & Roll/PP
- 24 The Hair Band Night - 80's Hair Metal/LM
- 31 Second Hand Soul Band - Motown, Funk, Soul/PP

#### August

- 7 Classical Blast - Classic Rock-Bach/LM



#### Venues

CP-Caboose Park  
37908 N. Fairfield Rd. Lake Villa

LVDL-Lake Villa District Library  
140 N. Munn Rd. Lindenhurst

LM-Lehmann Mansion  
485 N. Milw. Ave. Lake Villa

PP-Parkman Pavilion  
2200 E. Grass Lk. Rd. Lindenhurst

**#LIVEMUSICINTHEPARKS2024**

Updates can be found on  
Lindenhurst Park District-Facebook, and [www.lindenhurstparks.org](http://www.lindenhurstparks.org).

**Title  
Sponsor:**

**Raymond**



**A N T I O C H**

Looking for a fun and engaging way to spend your time? If you're an active adult over the age of 50, we invite you to join us for our weekly drop-in activities, exciting trips, and more! Whether you're looking to make new friends, stay active, or simply try something new, we have something for everyone. So why not come and join us today? We can't wait to meet you!

## Active Adult Activity Pass

Get your Active Adult Activity Pass to join in the fun! The Activity Pass gives you access to our growing list of Drop-in activities including Video Aerobics and Cards. The cost is \$20 for residents and \$25 for non-residents, and the pass is valid for one year from the date of purchase. Purchase your pass at the registration desk during regular business hours to take advantage of the fun. Not ready to commit? Pay just \$1 per drop-in activity!

Do you have a suggestion for a Drop-in program? We'd love to hear your ideas! Contact Allison Tibor at 847.356.6011 x 1005, or [atibor@lindenhurstparks.org](mailto:atibor@lindenhurstparks.org).



## Weekly Drop-In Active Adult Activities

Registration is not required

• **Video Aerobics**—Get up & ACTIVE! Improve your balance, flexibility, and cardiovascular health with a low-impact workout set to a variety of fitness videos suitable for all abilities.

**M/W/F 9:00-10:00am, Studio A**

**Fee: Activity Pass or \$1 per visit**

• **Cards**—Come be part of this lively community for some enjoyable competition! This engaging group gathers weekly to play a variety of games, including Hand, Foot & Knee. Bring a friend along with your favorite game. Remember to pack some snacks or lunch in case you get hungry.

**Th 10:00am-4:00pm, Activity 3**

**Fee: Activity Pass or \$1 per visit**

**NEW**

**50+**  
Quarterly  
**ACTIVE ADULT  
LUAU LUNCHEON**

**Friday, June 14**  
*Registration Deadline is Fri. June 7*  
**11:30am-1:00pm**  
Activity 1/2

**\$10**  
per person  
not eligible for discount

Calling all adults 50+! We invite you to our first Quarterly Active Adult Luncheon! We invite you to have lunch, meet your neighbors, socialize, and make new friends each season. Lunch, coffee, and water will be provided; feel free to bring a beverage of your choice!

**Advanced registration is required. Register online or by calling 847.356.6011.**

Save the dates for our future luncheons...9/13/24, 1/10/25, 3/14/25

## Trip Information

Transportation is in a Park District vehicle to keep trips affordable. Fees are per person. The return times are approximate.

## Trip Refund Policy

Refunds are only given under the following circumstances:

- A full refund will be given if the Park District cancels the trip.
- A refund, less a cancellation fee, will be given if the spot can be filled.
- A refund, less a cancellation fee, and any pre-paid costs will be given when you withdraw at least 7 days prior to the trip.
- Withdrawals within 7 days of the trip will only be refunded for medical or relocation reasons and will be less a cancellation fee and pre-paid costs. *Pre-paid cost may consist of tickets, admission, meals, and/or supplies.*

# Active Adults Trips...

For more details or if you have questions, please contact Allison Tibor at 847.356.6011 x 1005 or [atibor@lindenhurstparks.org](mailto:atibor@lindenhurstparks.org).

## Trip Information

Transportation is in a Park District vehicle to keep trips affordable. Fees are per person. The return times are approximate. See the refund policy on page 4

**Lindenhurst residents receive \$5 off each trip!**

### Anderson Japanese Gardens

Rockford, IL

50+

\$55NR

Anderson Japanese Gardens is a tranquil oasis located in Rockford, Illinois. It's renowned for authentic Japanese landscaping, serene ponds, winding pathways, and meticulously manicured plants. The gardens offer a peaceful retreat where visitors can immerse themselves in the beauty of nature and experience the art of Japanese gardening. Throughout the gardens, we encounter traditional Japanese elements such as stone lanterns, pagodas, and tea houses, each adding to the authenticity of the experience. We take a moment to participate in a traditional tea ceremony, savoring the simplicity and elegance of the ritual. It will be a truly magical experience, and we will leave feeling refreshed, inspired, and grateful for the opportunity to immerse ourselves in such natural splendor. Enjoy lunch at Fresco at the Garden. The trip includes transportation by Park District bus, tour ticket, and lunch. **Extensive standing and walking.**



**Reg. Deadline: Fri, May 31, or when full**

Tu June 11 10:15a-5:30p Min/Max: 10/14

### US Mailboat Tour on Lake Geneva

Lake Geneva, WI

50+

\$69NR

There are only a handful of places left in the country where mail is still delivered by boat and none with a more exciting and scenic tour than this! With over 100 years of mail service, Lake Geneva Cruise Line still delivers mail to about 75 homes around the lake on a daily basis. The Walworth departs promptly at 10am every day with a load of passengers, mail, newspapers, and a very unique mail person. This cruise is one of a kind, with an in-depth narration of the Lake Geneva area and its ties to Chicago. The Mailboat returns to the Riviera Docks after its 2 ½ - hour cruise around the entire lake. Once back on land, we will head over to Popeyes on Lake Geneva for lunch (on your own).

The trip includes transportation by Park District bus and tour. **Moderate walking and standing.**



**Reg. Deadline: Th, May 30 or when full**

Th June 20 8:00a-4:00p Min/Max: 6/14

### Sanfilippo Estate & Wild Onion Brewery

Barrington, IL

50+

\$85NR



Sanfilippo Estate, a private residence that is not open to the general public except through group tours, features one of the world's finest collections of restored, automatic musical instruments and other turn-of-the-century antiques. Our guided tour begins in the main Residence, learning about the Sanfilippo Collection of automated music machines, the Residence's French Second Empire setting, Tiffany glass lamps, an old-fashioned penny arcade, a recreation of a turn-of-the-century casino, and culminates in the Music Theater with a mini-concert on the world's largest theater pipe organ! The tour continues in the Carousel Pavilion, hearing a selection of musical organs, and viewing a locomotive used by Henry Ford. The featured jewel in the building is the Eden Palais Carousel, built in 1890, and is fully restored and operational. An experience you will never forget. After the tour, we will enjoy lunch at Wild Onion Brewery in Lake Barrington. Please select your lunch option when you register. Lunch options are Pub Burger, Chicken Salad Wrap, Chicken, and Pasta, Rachel sandwich (pastrami, sauerkraut, swiss, and 1000 island dressing), Chicken Caesar Salad, Mediterranean Salad, and Southern Salad.

The trip includes transportation by Park District bus, tour, and lunch. **Moderate walking and standing.**

**Reg. Deadline: Th, June 27 or when full**

Th July 11 8:30a-4:00p Min/Max: 6/14

# Active Adults Trips...

For more details or if you have questions, please contact Allison Tibor at 847.356.6011 x 1005 or [atibor@lindenhurstparks.org](mailto:atibor@lindenhurstparks.org).

## Trip Information

Transportation is in a Park District vehicle to keep trips affordable. Fees are per person. The return times are approximate. See the refund policy on page 4

**Lindenhurst residents receive \$5 off each trip!**

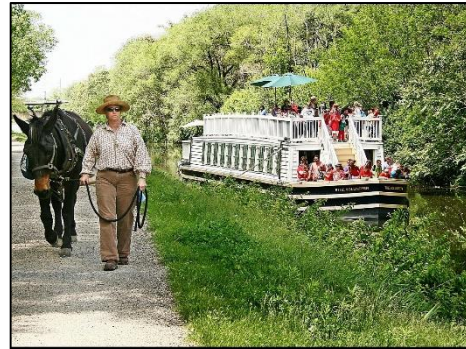
### Canal Boat Ride – Take a Journey Back to the 1800s

Lasalle, IL

50+

\$60NR

Take a journey back in time aboard the "Volunteer," a 70-passenger, mule-pulled 1840's replica canal boat, as it coasts gently up and down the I&M Canal. Bring your camera, grab a snack and something to drink at the Lock 16 Café & Visitor Center, and climb aboard for an hour of peaceful, historical fun! Every trip begins with "Mule Tending 101" as our period-dressed guides introduce the passengers to their intrepid canal mules, Larry and Moe. The crew tells the tales of the canal days while they guide the boat a mile up the canal to the Little Vermillion aqueduct and back. Lunch will be at Riverfront Grill, right on the Illinois River! The trip includes transportation by Park District bus, tour, and lunch. **Minimal walking.**



Reg. Deadline: Fri, July 19, or when full

Th July 25 8:30a-5:00p Min/Max: 10/14

### Medieval Times

Schaumburg, IL

50+

\$82NR

Your experience will begin when you enter our 11th-century, European-style Castle. Prior to the show, you can admire authentic weaponry and visit the gift shops. When you enter the arena, you will be seated in one of the six sections that correspond to the knight of the Realm for whom you will be cheering. During the tournament, you'll enjoy a four-course feast, be treated to a spectacular display of equestrian skills, and witness our knights jousting and competing in games of skill on horseback. The tournament culminates with incredible sword fights and the crowning of one of the Knights of the Realm as champion! Noble guests will feast on garlic bread, tomato bisque soup, roasted chicken, buttered corn, herb-basted potato, and the dessert of the Castle. A vegetarian option is available if requested.

The trip includes transportation by Park District bus, show, and dinner. **Minimal walking.**



Reg. Deadline: Fri, July 19 or when full

Su Aug. 4 2:45p-7:00p Min/Max: 6/14

### Luncheon Cruise – Explore Lake Geneva

Lake Geneva, WI

50+

\$82NR



For the true Lake Geneva Experience, you have to get on the water! Beautiful estates, mansions, and natural scenery that can only be viewed from the lake unfold through a descriptive and insightful narrated tour. Relax and enjoy all the scenic beauty of Lake Geneva as you cruise around the entire lake and are served a delicious sit-down meal aboard the Grand Belle of Geneva. Lunch will be Braised Beef Short Ribs, served with garlic mashed potatoes and roasted carrots. A vegetarian option (Pesto Pasta with sun-dried tomatoes, asparagus, and local mushrooms) is available with advance notice.

The trip includes transportation by Park District bus, boat cruise, and lunch.

**Minimal walking.**

Reg. Deadline: Fri, Aug. 2 or when full

Tu Aug. 13 10:00a-3:00p Min/Max: 10/14

**Registration Form**  
**LINDENHURST PARK DISTRICT**  
2200 E. GRASS LAKE ROAD • LINDENHURST, ILLINOIS 60046  
(847) 356-6011 • [www.lindenhurstparks.org](http://www.lindenhurstparks.org)  
**PLEASE PRINT**

Entered

Primary Guardian  
Last Name \_\_\_\_\_ First Name \_\_\_\_\_ Home Phone \_\_\_\_\_

Cell Phone \_\_\_\_\_ Work Phone \_\_\_\_\_ E-Mail Address \_\_\_\_\_

Address \_\_\_\_\_ City \_\_\_\_\_ Zip Code \_\_\_\_\_

Emergency Contact \_\_\_\_\_ Emergency Telephone \_\_\_\_\_

Please check this box if you wish someone to contact you regarding special accommodations to participate in the program.

Participant's Name	Sex	Age	Birthdate	Grade	Activity Title	Date(s) of Activity	Day(s)	Time	Fee

Would you like to donate to our participant scholarship?  Yes  No **\$1.00**

**WAIVER AND RELEASE OF ALL CLAIMS**

**TOTAL** \_\_\_\_\_

**IMPORTANT INFORMATION**

The Lindenhurst Park District ("District") is committed to conducting its recreation programs in a safe manner and holds the safety of participants in high regard. The District continually strives to reduce risks of injury and insists that all participants follow safety rules and instructions that are designed to protect the participant's safety. However, participants and parents / guardians of minors (collectively, "You") registering for this program / activity must recognize that there is an inherent risk of injury when choosing to participate in recreational activities / programs, including hazardous recreational activities.

You are solely responsible for determining if you or your minor child / ward are physically fit and / or skilled for the activities contemplated by this agreement. It is always advisable, especially if the participant is pregnant, disabled in any way or recently suffered an illness, injury or impairment, to consult a physician before undertaking any physical activity, especially in light of the physical requirements related to the particular activity for which You are registering.

**WARNING OF RISK**

Recreational activities / programs are intended to challenge and engage the physical, mental and emotional resources of each participant. Despite careful and proper preparation, instruction, medical advice, conditioning and equipment, there is still risk of serious injury (including exposure to a communicable disease) when participating in any recreational activity / program. Understandably, not all hazards and dangers can be foreseen. These risks are increased when You participate in hazardous recreational activities.

Depending on the particular activity, participants must understand that certain risks, dangers and injuries due to inclement weather, slipping, falling, poor skill level or conditioning, carelessness, horseplay, unsportsmanlike conduct, premises defects, inadequate or defective equipment, inadequate instruction or officiating, exposure to communicable disease and all other circumstances inherent to indoor and outdoor recreational activities / programs exist. In this regard, it must be recognized that it is impossible for the Lindenhurst Park District to guarantee absolute safety.

**WAIVER AND RELEASE OF ALL CLAIMS AND ASSUMPTION OF RISK**

Please read this form carefully and be aware that in signing up and participating in this program / activity, you will be expressly assuming the risk and legal liability and waiving and releasing all claims for injuries, damages or loss which you or your minor child / ward might sustain as a result of participating in any and all activities connected with and associated with this program / activity (including transportation services / vehicle operation, when provided) and exposure to communicable disease.

I, THE UNDERSIGNED, RECOGNIZE AND ACKNOWLEDGE THAT THERE ARE CERTAIN RISKS OF PHYSICAL INJURY TO PARTICIPANTS IN THIS PROGRAM / ACTIVITY. THAT THIS ACTIVITY MAY BE CONSIDERED A HAZARDOUS RECREATIONAL ACTIVITY, AND I VOLUNTARILY AGREE TO ASSUME THE FULL RISK OF ANY AND ALL INJURIES, DAMAGES OR LOSS, REGARDLESS OF SEVERITY, THAT MY MINOR CHILD / WARD OR I MAY SUSTAIN AS A RESULT OF SAID PARTICIPATION. I FURTHER AGREE TO FULLY AND VOLUNTARILY WAIVE, RELEASE AND RELINQUISH ALL CLAIMS I OR MY MINOR CHILD / WARD MAY HAVE (OR ACCRUE TO ME OR MY CHILD / WARD) RESULTING FROM ANY AND ALL INJURIES, ILLNESSES, DAMAGES, OR LOSS THAT MY MINOR CHILD / WARD OR I MAY SUFFER AS A RESULT OF PARTICIPATING IN THIS PROGRAM / ACTIVITY OR USING DISTRICT PROPERTY AGAINST THE LINDENHURST PARK DISTRICT, INCLUDING ITS OFFICIALS, AGENTS, VOLUNTEERS AND EMPLOYEES (HEREINAFTER COLLECTIVELY REFERRED AS "DISTRICT PARTIES").

Photos are periodically taken in a class, during a special event or at the Districts parks. Please be aware that these photos are for District use only and may be used in the Districts print and Internet publications.

I have read and fully understand the above important information, warning of risk, assumption of risk and waiver and release of all claims. If registering on-line, your signature shall substitute for and have the same legal effect as an original signature.

PLEASE PRINT: Participant's Name \_\_\_\_\_ Date \_\_\_\_\_

Participant's Signature (18 years or older or Parent / Guardian): \_\_\_\_\_

**PARTICIPATION WILL BE DENIED** If the signature of adult participant or parent / guardian and date are not on this waiver.

**TOTAL ENCLOSED \$** \_\_\_\_\_  Cash  Check # \_\_\_\_\_  Visa  MasterCard  Discover  
**Credit Card Number:** \_\_\_\_\_ **CCV:** \_\_\_\_\_ **Exp. Date:** \_\_\_\_\_